

Eviction and Voter Turnout: An Individual-Level Analysis

Yi Wang and Ted Enamorado, Washington University in St. Louis



Research Question

- How does an eviction filing prior to a general election affect a renter's probability of voting?

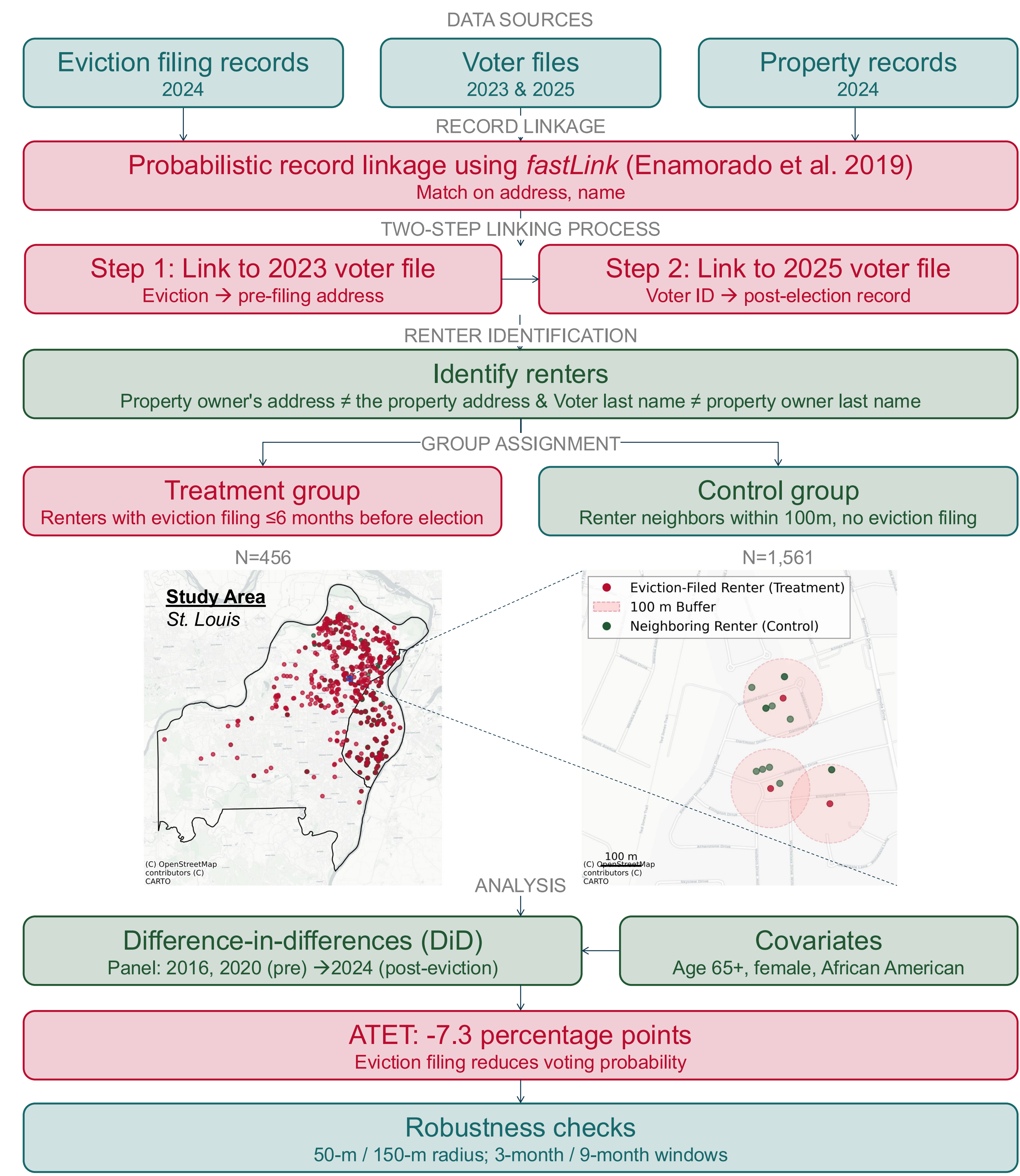
Contribution to the Literature

- Individual-level causal effect:** We looked at the individual-level causal effect of receiving an eviction filing on voter turnout, which fills a gap in existing literature that had only examined this relationship at the neighborhood (census tract) level (Slee and Desmond 2023).
- Methodological contribution:** Since renters often move after an eviction filing, we linked eviction records to the prior year's voter file (when the renter was still at that address), then trace them forward through their voter ID. This overcomes a major data challenge that had prevented individual-level analysis before.

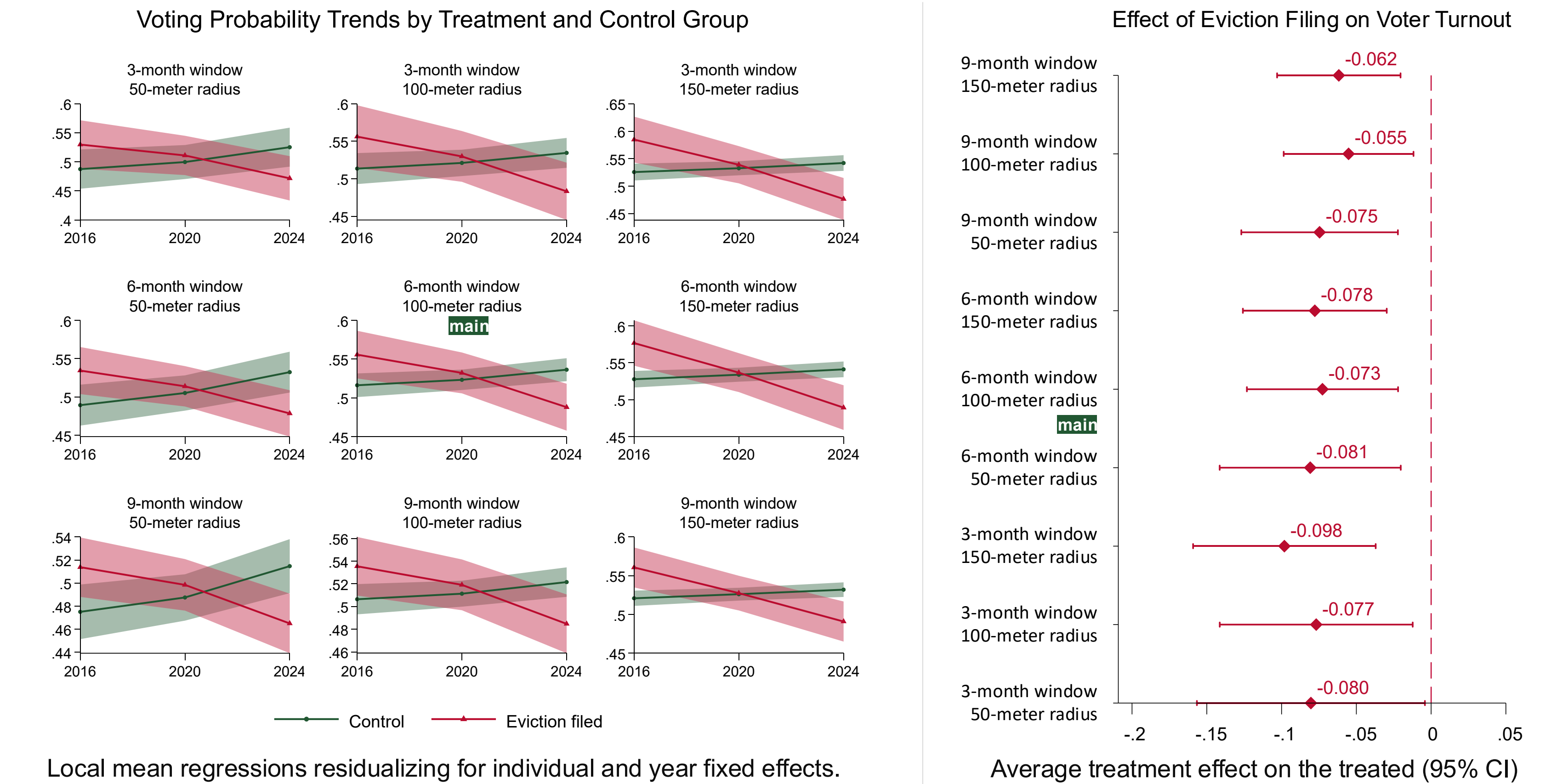
Key Takeaways

- An eviction filing within 6 months before the 2024 general election reduced a renter's probability of voting by about 7 percentage points compared to neighboring renters within 100 meters who weren't filed against. **Roughly a 14% reduction in the likelihood of voting.**
- The effect is robust.** The negative impact holds across 9 model specifications — whether you define neighbors as within 50, 100, or 150 meters, and whether you look at eviction filings 3, 6, or 9 months before the election.

Study Design



The Negative Effect of Eviction Filing on Voter Turnout



DiD Model Specification

$Turnout_{it} = \beta_0 + \beta_1 Post_t + \beta_2 Evic_i + \beta_3 Post_t \times Evic_i + \beta_4 Covariates_i + \lambda_t + \epsilon_{it}$

- $Turnout_{it}$ is a binary variable indicating whether renter i voted in the general election held in year t .
- β_0 is the intercept.
- $Post_t$ is a binary variable that equals 1 if the period is after the eviction filing, and 0 if before.
- $Evic_i$ is an indicator for whether renter i faced an eviction case 6 months prior to the 2024 general election day.
- $Post_t \times Evic_i$ is the interaction term representing the effect of eviction filing on voter turnout.
- $Covariates_i$ include whether renter i is 65 and above, whether renter i is female, and whether renter i is African American.
- λ_t represents the year fixed effects.
- ϵ_{it} is the error term.

Who's Affected

The treatment group skews younger, more female, and more African American. → Eviction's suppressive effect on voting disproportionately hits demographics that are already vulnerable.

